

OMNI - Cluster

**On-site Multipurpose
Number-crunching Infrastructure**

acronym

On-site
Multipurpose
Number-crunching
Infrastructre

speaker

Gerd Pokorra

studies: electrical engineering

University Siegen: May 1988

email: pokorra@uni-siegen.de

fon: 740 - 4379

racks



OMNI - Cluster

457 MEGWARE Compute Nodes

914 AMD EPYC™ 7452
24 NVIDIA® Tesla® V100PCIe

2 MEGWARE SMP Nodes

8 Intel® Xeon® Scalable Gold 5218

4 MEGWARE Login Nodes

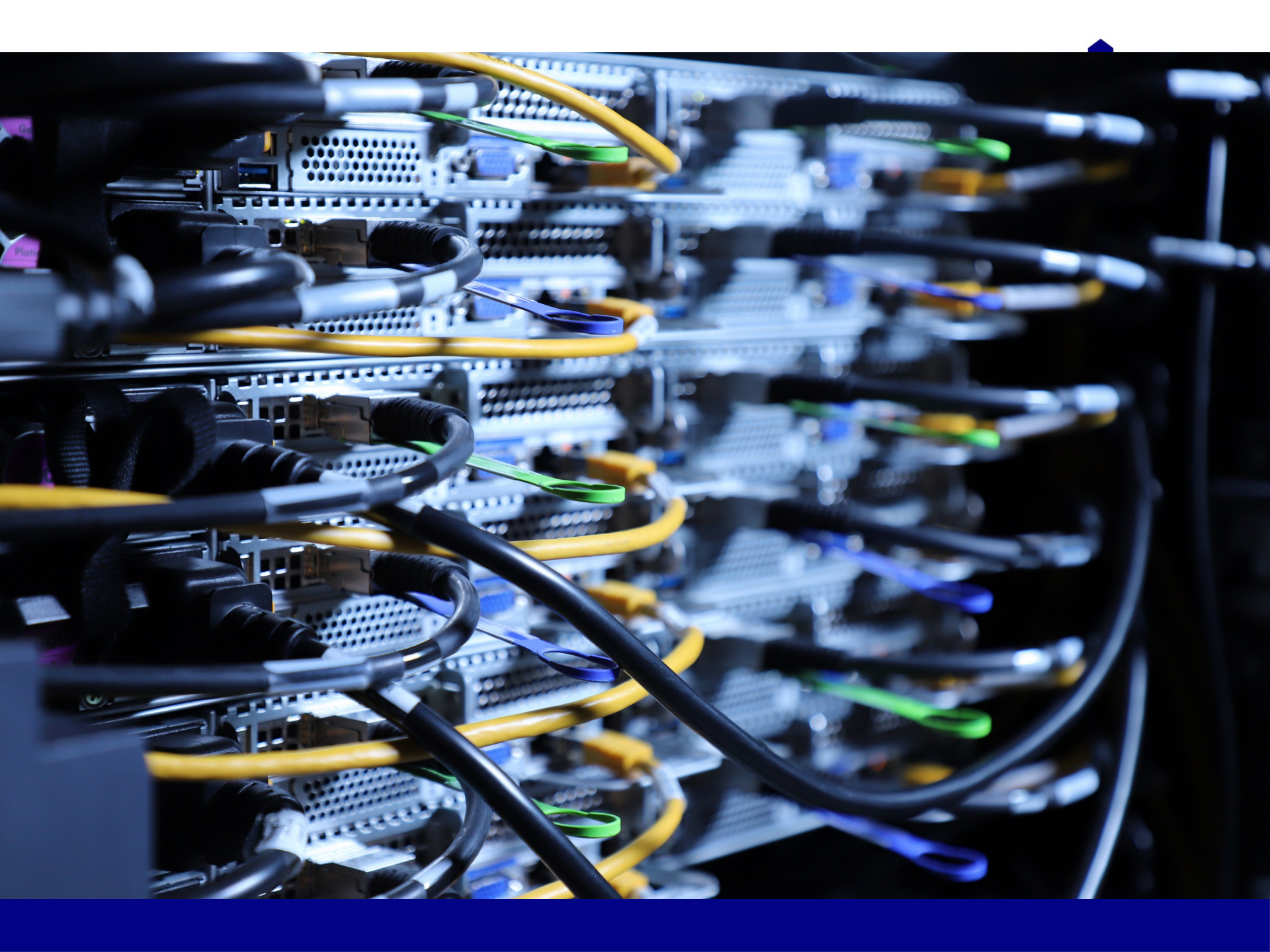
1 MEGWARE Management Node

Mellanox InfiniBand HDR100

IBM Spectrum Scale - 1.15 PB

 UNIVERSITÄT
SIEGEN

 MEGWARE



hpc partition

434 compute nodes

- chassis: Gigabyte (2 nodes per rack unit)
- CPU: 2x AMD EPYC 7452 32-Core Processor
- RAM: 256 GB (16 x DIMM DDR4-3200 16GB)
- diskless
- node names: hpc-node001..hpc-node434

HPE Moonshot 1500

45 blades

41 htc compute nodes

- ProLaint m710x Server Cartridge
- CPU: Intel Skylake (1 x x86)
Intel(R) Xeon(R) CPU E3-185L v5 @ 3.00 GHz
- RAM: 64 GB (4 x 16 GB)
- node names: htc-node001..htc-node041

HPE Moonshot 1500



HPE Moonshot 1500



login nodes (htc)

```
> ssh omni.zimt.uni-siegen.de  
(> ssh hpc.zimt.uni-siegen.de)  
  
> ssh hpc-login01.zimt.uni-siegen.de  
> ssh hpc-login02.zimt.uni-siegen.de  
> ssh hpc-login03.zimt.uni-siegen.de  
> ssh hpc-login04.zimt.uni-siegen.de
```

more login nodes (htc)

```
> ssh htc.zimt.uni-siegen.de  
> ssh htc-login01.zimt.uni-siegen.de  
> ssh htc-login02.zimt.uni-siegen.de  
> ssh htc-login03.zimt.uni-siegen.de  
> ssh htc-login04.zimt.uni-siegen.de
```

restriction

- ssh-public-key outside of 141.99.X.X

getting access (account)

- every member (employee, staff) of the University Siegen
- booking is needed
<https://unisim.zimt.uni-siegen.de/>
- accepting the roles is needed

getting access for students

- have to be invited from someone with OMNI account (staff, employee)
- get an email
- follow the link from the email
- accepting the terms is needed

- /home

- disk quota: 100 GB per user

- `> df -h ~`

Filesystem	Size	Used	Avail	Use%	Mounted on
hpcnas.zimt.uni-siegen.de:/vol/HPCNAS_homes	100G	29G	72G	29%	/home

- /work

- 1.1 petabyte (10^{15}) from 6 storage server
- IBM Spectrum Scale
- temporary limited disk space by the workspace application

work smb export

```
$ ws_allocate demo 30
Info: creating workspace.
/work/ws-tmp/bond007-demo
remaining extensions : 3
remaining time in days: 30
$ echo "nurso" > /work/ws-tmp/bond007-demo/alf
```

```
# mount -t cifs -o
user=bond007,domain=unisiegen
//141.99.18.8/work/bond007-demo /mnt
# cat /mnt/alf
nurso
```

required package

- cifs-utils

```
> dnf install cifs-utils
```

```
> apt install cifs-utils
```

(/sbin/mount.cifs)

syntax for MS Windows

\\141.99.18.8\work

\\omni\work

\\omni-storage\work

Hardware

10 GPU-Knoten

- GPU: 4 x NVIDIA Tesla v100 PCIe 16 GB

Hardware

2 SMP-Knoten

- CPU: 4x Intel® Xeon® Gold 5218 CPU @ 2.3 GHz
- RAM: 1584 GB

5 Kubernetes Knoten

- CPU: 2x AMD EPYC 7452 32-Core Processor
- RAM: 256 GB

8 OpenStack Knoten

- CPU: 2x AMD EPYC 7452 32-Core Processor
- RAM: 256 GB